

# Monmouth County Resident's



# Recycling Guide

## In This Issue

Why Recycle? .....	2
Sorting Your Mandated Recyclables .....	2-3
Other Items You Can Recycle .....	4
Disposing of Hazardous & Non-Hazardous .....	5
How & Where to Recycle .....	6-9
Municipal Recycling Drop-Off Facilities .....	10-13
County Recycling & Hazardous Waste Drop-Off Facilities .....	14
Private Recycling Drop-Off Facilities .....	15
Monmouth County Reclamation Center .....	18-19



### Reclamation Center Hours of Operation

Monday - Friday  
7 a.m.-3:30 p.m.,  
Sat. 7 a.m.-2 p.m.

### Recycling Office

Monday - Friday  
9 a.m.-4:30 p.m.  
732-683-8686 Ext. 6721

## Why Recycle?

Municipalities in Monmouth County generate tons of garbage each year. Most of it is transported to the landfill in Tinton Falls, where it will stay forever. Special steps are taken to make sure that odor, pests and generated gases are controlled and that fluid run-off does not pollute our groundwater.

Currently, only about 52% of the garbage in Monmouth County is recycled. Recyclable items do NOT go to the landfill, which saves money and protects the environment. Recycled items can also be made into new products.



LEFT: All the garbage in Monmouth County is brought to the Reclamation Center in Tinton Falls where it is compacted then placed in the landfill. RIGHT: Recycling facility

If you live in Monmouth County, the following items must be recycled (they are banned from the landfill).  
**SEE CHART (PP. 6-9) FOR INSTRUCTIONS ON WHERE TO RECYCLE.**

## Mandated Recyclables & Sorting



### Glass Bottles & Jars

Food and beverage bottles and jars are acceptable.

- **DO NOT INCLUDE:** ceramics, dishes, glassware, lightbulbs, windows
- **DO NOT INCLUDE:** caps or lids



### Metal Cans

Aluminum cans, Tin cans and Bi-metal cans (tin cans with aluminum lids) are all accepted. Please rinse.

Non-hazardous aerosol cans are also accepted. Empty please.

- **DO NOT INCLUDE:** aluminum foil, plates, trays or cookware or any metal scrap
- **LABELS ARE OK**



### PLASTIC CONTAINERS

Sorting plastic helps produce high-quality recycled products. Manufacturers print a standard

code (#1-7) on the bottom of every container. ONLY recycle Types #1 and 2 with a "pourable" neck smaller than the body. No. 1 Polyethylene Terephthalate PET, PETE Soft drink, water, soda bottles or No. 2 High Density Polyethylene Detergent bottles



- **DO NOT INCLUDE:** plastic bags, margarine tubs, diaper wipes containers, yogurt cups, clear salad containers, food storage containers



### LEAVES & GRASS CLIPPINGS

Most towns collect unbagged leaves in the fall and spring. Grass clippings can be left on the lawn, added to compost or brought to drop off at County Reclamation

Center (landfill) for a fee.

- **DO NOT THROW LEAVES OR GRASS IN THE TRASH**

## Mandated Recyclables & Sorting



### PAPER

Such as cardboard shipping boxes (*waffle section between layers*), flattened; Mixed Paper including: chipboard (*cereal boxes*), white/color paper, junk mail, magazines, softcover books, wrapping paper/non-metallic and Newspapers including inserts are all accepted.

- **DO NOT INCLUDE:** grease/food stained cardboard (*pizza boxes*) or waxed cardboard.
- **DO NOT INCLUDE:** food wrappers, paper plates and cups, napkins, paper towels or items from food/hygiene use
- **DO NOT INCLUDE:** newspaper used for pet waste or household projects.



### CAR BATTERIES & MOTOR OIL

Many towns accept these for drop-off, see pp. 10-13. Both are also accepted at Monmouth County's Household Hazardous Waste (HHW) Facility, see p. 14.

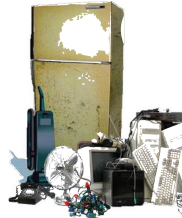


### HOUSEHOLD BATTERIES

Silver "button" batteries and rechargeable batteries/battery packs (*like those found with power tools, laptops, etc.*) can be brought to the Monmouth County Hazardous Household Waste facility (HHW),

see p. 14 or a retail store drop-off, visit [www.call2recycle.org](http://www.call2recycle.org) for a location near you. A few towns also accept button batteries for drop-off, see pp 10-13.

**Regular household A, AA, AAA, C, D, and 9-volt batteries can be thrown in the trash.**



### "BULK" RECYCLABLES

Most towns have special pick-ups for certain bulky recyclables once or twice a year. You may also drop them off at your town facility, if they accept these items, see pp 10-13.

If your town does not accept these items, you must drop them off at a Private Bulk Waste Recycling Facility (for a fee, see p. 15).

- **ASPHALT, BRICK, CONCRETE**
- **METAL SCRAP (SMALL METAL APPLIANCES, WINDOW FRAMES, ETC)**
- **TREE PARTS; STUMPS AND LIMBS >3" THICK (DIAMETER)**
- **COMPUTERS & TVS (ELECTRONICS)**

## Do Not Recycle; Put in Regular Trash

### Drinking Glasses, Dishware, Windows, Etc

Non-recyclable glass looks different because it's made from different ingredients and has different melting point. If a ceramic mug is put into a furnace with recyclable glass bottles, for instance, it will melt more slowly causing defects in the process.

### Non-Recyclable Plastic Containers, #3 - #7 Margarine Tubs, Diaper Wipes, Take-Out Plastics, Bottle Caps And Straws, Etc



No. 3 Polyvinyl Chloride PVC, V (*Example: Very hard plastic what salad bar containers are made of*)



No. 4 Low Density Polyethylene LDPE (*Example: Fresh produce bags, also used in dry cleaning*)



No. 5 Polypropylene PP (*Example: Bottle caps, drinking straws, yogurt cups*)



No. 6 Polystyrene (*Example: Styrofoam*)

No. 7 Other Ex: Polycarbonate baby bottles.

### Non-Recyclable Plastic Containers #1 - #2 Plastic Tupperware, With Wrong Size Neck, Plastic Containers

Some plastic containers, even if they have #1 or #2, are made from a different process, and CANNOT be recycled at this time. If the neck is the same size as the body, throw them in the regular trash, (*along with caps, which are made from yet another, harder plastic to withstand twisting/turning*).

### Plastic Bags

These clog machines at the processing plants. Return to store if possible

### Aluminum Foil, Plates, Trays Or Cookware

### Food Stained Pizza Boxes And Waxed Cardboard

### Food Wrappers, Paper Plates And Cups, Napkins, Paper Towels



## OTHER items you can recycle

These companies/organizations may accept the following items to be converted for another use, refurbished or donated. Call ahead. This list is provided for information purposes only. The County does not endorse any company or organization.



### CDs, DVDs, VHS Tapes

**MONMOUTH WIRE AND COMPUTER RECYCLING**,  
3250 Shafto Rd., Tinton Falls, NJ  
732-922-3320. **Fee: .50 cents per pound**

Or, visit <http://www.recyclingforfree.com> for an address to send them away to be melted. The service is free but you pay for postage.



### Clothing & Shoes

**DROP BOXES** can be found in parking lots of local grocery stores. See pp 10-13. Sneakers/athletic shoes with synthetic or rubber soles can also be reused.

**VISIT NIKE REUSE-A-SHOE**

[http://www.nike.com/us/en\\_us/c/better-world/reuse-a-shoe](http://www.nike.com/us/en_us/c/better-world/reuse-a-shoe)

to find a local drop-off site.



### Eyeglasses

**COLLECTION BOXES** can be found in some local stores, such as Walmart Vision Centers.

### Fishing Line

**BAHRS LANDING MARINA**, Highlands

**LEONARDO STATE MARINA**, Middletown have collection bins.



### Hearing Aids

**STARKEY HEARING FOUNDATION**

<http://www.sotheworldmayhear.com>

recycles any make or model of hearing aid, no matter how old. **LION'S CLUB** also accepts hearing aids.

### Shrink Wrap

**MCC SERVICES**, Cranbury NJ, 732-605-0002

**MR. SHRINK WRAP OF NJ** 856-858-6610

## Furniture/Usable Household Goods— Pick Up Service

Charitable organizations make regular pick-ups from homes in Monmouth County. Call to make arrangements; they reserve the right to reject items in poor condition.

**BIG BROTHERS, BIG SISTERS**

<http://www.njpickup.org> 732-970-9231 or 877-336-8828

**CATHOLIC CHARITIES** 609-394-8847

**GOODWILL INDUSTRIES**-entire house contents only 973-481-2300

**SALVATION ARMY**-full sets of furniture 609-599-9801

**RECYCLATION TECHNOLOGY ASSOCIATES** 732-363-0556

**RESCUE MISSION OF TRENTON** 609-695-1436

**JEWISH FAMILY & CHILDREN'S SERVICES/  
MONMOUTH COUNTY** 732-774-6886



### Laser Toner Cartridges

**CARTRIDGE WORLD**

665 Hwy. 35 N, Middletown NJ 732-796-0770

1815 Hwy. 35 N, Oakhurst NJ 732-531-4232

**CARTRIDGE DEPOT**, Manasquan, NJ 732-223-0902

**LASER RENEW**, Middletown, NJ 732-957-0515

**LASER SAVE**, Freehold, NJ 732-431-3339



### Styrofoam Packing Material

**FOAM PACK, INC.** (Rigid foam only, no "peanuts")

72 Fadem Road, Springfield, NJ

973-376-3700

**UPS STORE/MAIL BOXES ETC.** (Place "peanuts" in a clear plastic bag)

3587 Route 9 South Shop-Rite Center Freehold 732-303-1331

Rt. 35 & Harmony Road Middletown 732-957-8222

4057 Rte. 9 Aldrich Plaza, Howell 732-364-3994

Shrewsbury Plaza Shopping Center 732-389-8586

520 Rte. 9, Manalapan 732-536-4490

48 Broad Street, Red Bank 732-530-0664

2435 Hwy. 34 Manasquan 732-292-1919

**PACK MAIL CENTERS OF AMERICA**

879 W. Park Ave., Ocean 732-493-3422

**POSTMARK PLUS**

1070 East Route 34, Matawan 732-583-0074



### Tires

**ABSOLUTE AUTO**, Middlesex, NJ 732-469-2202

**ALLIED IRON & RECYCLING** Neptune Twp., NJ

732-774-4100

**CARBON SERVICE, CORP** 610-377-3120

**CASINGS, INC. OF NJ** Hillside, NJ 908-851-7766

**MAZZA & SONS, INC.** Tinton Falls, NJ 732-922-9292

**OCEAN CTY. RECYCLING CTR.** 1497 Rte. 9, Toms River, NJ 732-244-8844

**RED BANK RECYCLING** Red Bank, NJ 732-747-7779

**RUBBER RECYCLE, INC.** Lakewood, NJ 732-363-0600

**SWTR** Newark, NJ 973-565-0181

**FREEHOLD CARTAGE** Rt. 33 Freehold, NJ 732-462-1001

**Residents Only: Drop off up to 8 Tires, max. 18" without rims at the Monmouth County Reclamation Center, Tinton Falls, see p. 18.**

## Disposing of Hazardous Items

Many of the following hazardous items are also banned from the Monmouth County landfill. Because they can be dangerous, they may require disposal at a special facility.

See chart (page 7) for where to dispose of hazardous items.

### **Ammunition, Fireworks, Gunpowder, Boat Flares (Shotgun type)**

Call your local Police Dept.

### **Appliances with Freon (Refrigerators, Air Conditioners, Humidifiers)**

Check Municipal Drop-Off Locations on pp. 10-13 to see if your town accepts OR call a Private Scrap Metal Facility p. 15. If you are purchasing a new freon containing appliance, make sure the company hauls away your old model when delivering the new one.

Visit: <http://www.NJCleanEnergy.com> for refrigerator disposal. Rebates are offered.

### **Asbestos (Shingles, Siding)**

Follow proper handling and transport procedures. Breaking/crushing asbestos releases dangerous fibers into the air. Kept intact, it is less harmful. Call the Monmouth County Health Department Solid Waste Enforcement Team (SWET) 732-683-8686 Ext. 5658 for handling instructions.

**Dispose of at a private Bulk Waste Material Facility, see p. 15.**

### **Hazardous Chemicals**

Many types are accepted at the Monmouth County Hazardous Household Waste facility (HHW), see p. 7.

### **Medical waste (sharps)**

Place in a laundry detergent bottle, throw in the regular trash. You may also wish to contact: XMED DISPOSAL, INC 866-735-9709

### **Oxygen Tanks**

*Welco/Praxair 1240 Rt. 33 Farmingdale*

The tanks should be in fair/good condition (no holes - otherwise they become scrap metal). Any markings on container must be legible. They will accept with or without gas. They will accept with or without valve

### **Propane Tanks**

Many types accepted (valve attached) at the Monmouth County Household Hazardous Waste (HHW) facility, p. 14; OR, call a Private Scrap Metal Facility, p. 15.

### **Smoke Detectors**

Smoke detectors contain radioactive elements, please contact your manufacturer for their recycling policy.

**FIREX 800-445-8299 FIRST ALERT 800-323-9005  
KIDDIE 800-880-6788**

## **Lightbulbs-CFLs**

Most household lightbulbs are now CFLs or Compact Fluorescent Lamps/Lights that contain a small amount of mercury in the curlicue tube. Fluorescent tube bulbs (overhead lighting) also contain mercury. If you've ever dropped one you will recognize the 'pop' and puff of vapor that results. That puff of vapor contains mercury, which is a toxin and environmental contaminant. Because most of the mercury can be recovered if the bulb is intact, recycling is the responsible way to dispose of burned-out CFLs (and tube fluorescent bulbs). Bring them to the return counter at your local Lowes or Home Depot. Fluorescent bulbs from residents can be disposed at the Monmouth County Hazardous Household Waste facility (HHW), see p. 8.



### **If You Break a CFL Bulb**

1. Open a window and leave the room for at least 15 minutes so vapors can disperse.
2. Wear disposable rubber gloves, carefully scoop up fragments and powder with stiff paper or cardboard. Then wipe the area clean with a damp paper towel or disposable wet wipe. Use sticky tape to pick up small pieces and powder. (Do NOT use a vacuum cleaner for the initial cleanup; that will disperse any remaining mercury vapor in the air and leave particles in the bag.)
3. Place all cleanup materials and gloves in a plastic bag and seal it in two plastic bags and put it in the outside trash. Wash your hands.
4. The first time you vacuum the area where the bulb was broken, remove the vacuum bag when you're done cleaning (or empty and wipe the canister). Put the bag and/or vacuum debris, as well as the cleaning materials, in two sealed plastic bags and put in the outdoor trash for normal disposal.

# How & Where to Recycle

## RESIDENTS ONLY

<b>RECYCLABLE ITEM</b>	<b>PUT OUT Municipal Recycling Pick-up At Curb (FREE)</b>	<b>PUT OUT Municipal Bulk Pick-up At Curb (FREE)</b>	<b>DROP OFF AT MUNICIPAL RECYCLING FACILITY (FREE)</b>	<b>DROP OFF AT MONMOUTH COUNTY FACILITY (FREE)</b>	<b>OTHER/ALSO</b>
<b>APPLIANCES</b>					
<b>Large:</b> Washers, Dryers, Stoves a.k.a. "WHITE GOODS"			✓ Many Towns Accept <i>see pp 10-13</i>		
<b>Small:</b> Toasters, Coffeepots, Fans, Vacuums, etc. ( <i>See also METAL, SCRAP</i> )		✓	✓		"BestBuy" offers free recycling for small electronics, fans, vacuums (3 items per household/day)
<b>With Freon:</b> Refrigerator, Air Conditioner, De-Humidifiers, Etc.			✓ Few Towns Accept, <i>see pp 10-13</i>		Private Scrap Metal Facility ( <i>You pay \$, see p. 15</i> )
<b>FREE:</b> Special NJ State Refrigerator/ Freezer Pick-up					1-877-270-3520 <a href="http://www.NJCleanEnergy.com">http://www.NJCleanEnergy.com</a>
<b>BATTERIES</b>					
"Button" Batteries			✓ Most Towns Accept <i>see pp 10-13</i>	✓ County Household Hazardous Waste (HHW) Facility <i>see p. 14</i>	
Car Batteries			✓ Many Towns Accept <i>see pp 10-13</i>	✓ County Household Hazardous Waste (HHW) Facility <i>see p. 14</i>	
Rechargeable Batteries/Packs— found in laptops, camcorders, power tools, etc.				✓ County Household Hazardous Waste (HHW) Facility <i>see p. 14</i>	Retail Store Drop-Off Find sites at: <a href="http://www.call2recycle.org">http://www.call2recycle.org</a>
<b>NOTE: REGULAR A, AA, AAA, C, D, 9-VOLT CAN BE THROWN IN THE TRASH.</b>					
<b>BUILDING MATERIALS</b>					
Wood ( <i>clean, untreated</i> )		✓		✓ County Reclamation Center <i>see p.18</i>	Private Bulk Material Facility ( <i>You Pay \$, see p. 15</i> )
<b>BRUSH</b> ( <i>see vegetation</i> )					
<b>CARS</b>					
Aluminum, Tin, Bi-metal	✓		✓		
<b>NO PIE TINS, COOKING PANS, TIN FOIL</b>					
<b>CAR PARTS</b> ( <i>see metal, scrap</i> )					
<b>CARDBOARD</b> ( <i>see paper</i> )					
<b>COMPUTERS</b> ( <i>see electronics</i> )					

<b>RECYCLABLE ITEM</b>	<b>PUT OUT Municipal Recycling Pick-up At Curb (FREE)</b>	<b>PUT OUT Municipal Bulk Pick-up At Curb (FREE)</b>	<b>DROPOFF AT MUNICIPAL RECYCLING FACILITY (FREE)</b>	<b>DROPOFF AT MONMOUTH COUNTY FACILITY (FREE)</b>	<b>OTHER/ALSO</b>
<b>ELECTRONICS</b>					
Cameras • Copiers • Cell Phones, Computers • (Monitors, CPUs, Scanners, Laptops, Peripherals, Keyboards, Mice, Printers, Cables), DVD and VCR Players • Fax Machines • Telephones • Radios, Stereo Components • TVs			Contact your town directly for information about the availability of electronics recycling	✓ County Reclamation Center <i>see p. 18</i>	
<b>GLASS</b>					
Bottles and jars from food, beverage, medicine	✓		✓		
<b>NO CERAMICS, DISHWARE, WINDOWS, LIGHTBULBS</b>					
<b>GRASS CLIPPINGS</b> ( <i>see vegetation</i> )					
<b>HAZARDOUS HOUSEHOLD WASTE</b>					
Anti-freeze* • Cleaning Products, Cooking Oil • Fertilizers, Fire Extinguishers • Fluorescent Tube Light Bulbs • Freon • Gasoline, Herbicides • Insecticides, Kerosene • Motor Oil • Muriatic Acid • Oil filters* • Paints <sup>†</sup> ( <i>Oil, Enamel, Spray Paint</i> ), Pesticides • Photography Chemicals, Road/Boat Flares ( <i>NO 12-gage Shotgun type</i> ), Solvents ( <i>Turpentine, etc.</i> ), Thermostat • Thermometers ( <i>Containing Mercury</i> ) Woodworking ( <i>Shellacs, Stains, Varnish</i> )				✓ County Household Hazardous Waste (HHW) Facility <i>see p. 14</i>	
<b>NO ASBESTOS</b>					
<b>NO PORTLAND CEMENT, GROUT/SPACKLE, LIME, ROCK SALT</b>					
* <b>SOME TOWNS ACCEPT ANTI-FREEZE AND OIL FILTERS, SEE P. 8-9</b>					
<sup>†</sup> <b>DRIED OUT LATEX PAINT CANS AND EMPTY PAINT CANS CAN BE THROWN IN REGULAR TRASH, LIDS OFF</b>					
<b>LEAVES</b> ( <i>see vegetation</i> )					

<b>RECYCLABLE ITEM</b>	<b>PUT OUT Municipal Recycling Pick-up At Curb (FREE)</b>	<b>PUT OUT Municipal Bulk Pick-up At Curb (FREE)</b>	<b>DROP OFF AT MUNICIPAL RECYCLING FACILITY (FREE)</b>	<b>DROP OFF AT MONMOUTH COUNTY FACILITY (FREE)</b>	<b>OTHER/ALSO</b>
<b>LIGHTBULBS</b> ( <i>intact</i> )					
Flourescent Tubes from Residents				County Household Hazardous Waste (HHW) Facility <i>see p. 14</i>	
CFLs ( <i>compact fluorescents</i> ) new curlicue-style contain mercury					Home Depot & Lowes at return counter
<b>NOTE: ROUND STYLE, OLDER INCANDESCENT BULBS (NO LONGER MANUFACTURED) CAN BE THROWN IN THE TRASH</b>					
<b>METAL, SCRAP</b>					
Aluminum Siding • Bed Frames, Metal Car Parts • Grills • Lawn Chairs Lawnmowers • Ladders, Window Frames					Specialized Scrap Metal Facility (You <i>may pay or receive \$,</i> <i>see p. 15</i> )
<b>MOTOR OIL</b> ( <i>see hazardous waste</i> )					
Used Motor Oil, Oil Filters					
<b>PAPER</b>					
Books: Softcover Hardcover: <i>remove cover &amp; binder</i> Brown Paper Bags, Cereal Boxes ( <i>aka chipboard,</i> <i>paperboard</i> ), Colored/White Paper Sheets, Envelopes ( <i>with &amp; without cellophane window</i> ) Junk Mail • Letterhead Paper, Magazines • Newspapers ( <i>clean</i> ), Phone Books Wrapping Paper ( <i>non-metallic</i> )					
<b>NOTE: NO FOOD/GREASE-STAINED PIZZA/FOOD BOXES. NO NEWSPAPER USED FOR PET WASTE OR PROJECTS.</b>					
<b>NOTE: NO PAPER PLATES, CUPS, NAPKINS, PAPER TOWELS OR ITEMS USED FOR FOOD/HYGIENE</b>					
<b>PLASTIC</b> ( <i>no caps</i> )					
Type 1 & 2 Pourable Only ( <i>neck smaller than body, eg. soft drink,</i> <i>detergent, water bottles</i> )					
<b>NOTE: NO YOGURT CUPS, BUTTER/MARGARINE TUBS, DIAPER WIPE CONTAINERS, PLASTIC BAGS</b>					
<b>OXYGEN TANKS</b>					
Empty or Full, valve attached or unattached					Welco/Praxair 1240 Rt. 33 Farmingdale



<b>RECYCLABLE ITEM</b>	<b>PUT OUT Municipal Recycling Pick-up At Curb (FREE)</b>	<b>PUT OUT Municipal Bulk Pick-up At Curb (FREE)</b>	<b>DROPOFF AT MUNICIPAL RECYCLING FACILITY (FREE)</b>	<b>DROPOFF AT <u>MONMOUTH COUNTY FACILITY</u> (FREE)</b>	<b>OTHER/ALSO</b>
<b>PROPANE TANKS</b>					
Empty or full, valve attached				County Household Hazardous Waste (HHW) Facility <i>see p. 14</i>	Many retailers (gas stations, home centers, etc.) offer credit up to \$20 when you trade in
<b>SCRAP METAL (SEE METAL, SCRAP)</b>					
<b>TIRES</b>					
Car tires only, 18" or less, no rims. Limit: 8 car tires			Many Towns Accept <i>see pp 10-13</i>	County Reclamation Center <i>see p.14</i>	
<b>VEGETATION--TREES, LEAVES, ETC.</b>					
Brush, tree limbs less than 3" diameter			Many Towns Accept <i>see pp 10-13</i>		
Grass Clippings <i>Monmouth County encourages homeowners to leave grass cuttings on the lawn or add to compost.</i>				County Reclamation Center <i>see p.14</i> You Pay: \$3/carload \$35/ton per truckload	
Leaves (free of debris, large branches)			Many Towns Accept <i>see pp 10-13</i>		
Tree Stumps, limbs larger than 3" diameter					Private Bulk Waste Recycle Facility (You Pay \$, <i>see p. 15</i> )
<b>WOOD (see building materials)</b>					

**DO NOT RECYCLE**

CHEMICALS AND PAINT ( OIL, SPRAY, ENAMELS)	County Household Hazardous Waste (HHW) Facility <i>see p. 14</i>	Private Bulk Material Facility (You Pay \$, <i>see p. 15</i> )
WOOD (treated/painted)		Private Bulk Material Facility (You Pay \$, <i>see p. 15</i> )
SHEETROCK		Private Bulk Material Facility (You Pay \$, <i>see p. 15</i> )
<b>ASBESTOS</b> Call: Monmouth County Health Dept. Solid Waste Enforcement Team (SWET) 732-683-8686 Ext.5650		Private Bulk Material Facility (You Pay \$, <i>see p 15</i> )

# Municipal Recycling Drop-off Facilities

LOCATION, HOURS & PHONE NUMBER	RECYCLABLES			VEGETATION			AUTOMOTIVE			HOUSEHOLD				OTHER NOTES
	BOTTLES & CANS	PLASTICS	PAPER/CARDBOARD	BRUSH	LEAVES	LEAF COMPOSTING RESIDENT DROP-OFF	MOTOR OIL	TIRES	CAR BATTERIES	APPLIANCES	BUTTON BATTERIES	CLOTHING	SCRAP METAL	
<b>ABERDEEN</b> 732-583-4200 DPW Yard, Lenox Rd. M-F: 7 a.m.-3 p.m.	•	•	•	•	•		•				•		•	Anti-Freeze
<b>ASBURY PARK</b> 732-775-0900 818 Lake Ave. M-F: 4 p.m.-8 p.m.; Sat. & Sun.: 10 a.m.-2 p.m.	•		•				•				•			
<b>ATL. HIGHLANDS</b> 732-291-1444 West Lincoln Ave. M-F: 7:30 a.m.-4:30 p.m.; Sat.: 7 a.m.-11 a.m.	•	•	•	•	•		•				•	•	•	Anti-Freeze, Books
<b>AVON</b> 732-502-4510 So. Station & Jefferson Mon.-Sat.: 8 a.m.-2 p.m.	•	•	•				•		•		•			
<b>BELMAR</b> 732-681-0452 6th & Railroad Aves. (Closed Wed.) M-Sat.: 8 a.m.-4 p.m.; Sun.: 9 a.m.-1 p.m.	•	•	•	•			•		•	• At DPW Office			•	
<b>BRADLEY BEACH</b> 732-776-2980	•	•	•				•		•	•				
<b>BRIELLE</b> 732-528-9389 Union Lane M-F: 7:30 a.m.-4 p.m.; Sat.: 9 a.m.-1 p.m.	•	•	•				•	•	•	•	•	•	•	Laser Cartridges, PVC Pipes, Plastic Bags, Film Plastic
<b>COLTS NECK</b> 732-462-7998 Public Works Garage, Rt. 34 North Fri. & Sat.: 10 a.m.-3 p.m.	•	•	•							•	•	•	•	
<b>DEAL</b> 732-531-1454 Runyon & Roseld Aves. Daily: 8:30 a.m.-4:30 p.m.	•	•	•					•		•			•	
<b>EATONTOWN</b> 732-389-7651 131 Lewis Street M-F: 7 a.m.-3 p.m. Third Sat. ea. month, 8 a.m.-12noon	•	•	•					• NO rims		•			•	
<b>ENGLISHTOWN</b> 732-446-9235 Boro Hall M-F: 8 a.m.-4 p.m.	•	•	•							•			•	
<b>FAIR HAVEN</b> 732-747-0241-x 401 1 Allen Street Sat.: 10 a.m.-2 p.m.	•	•	•							•			•	
<b>FARMINGDALE</b> 732-751-9041 Drop-off at RECOMMUNITY, 15 Railroad Avenue M-F: 7 a.m.-4 p.m.; Sat. 7 a.m.-11:30 a.m.	•	•	•											

LOCATION, HOURS & PHONE NUMBER	RECYCLABLES			VEGETATION			AUTOMOTIVE			HOUSEHOLD			OTHER NOTES	
	BOTTLES & CANS	PLASTICS	PAPER/ CARDBOARD	BRUSH	LEAVES	LEAF COMPOSTING RESIDENT DROP-OFF	MOTOR OIL	TIRES	CAR BATTERIES	APPLIANCES	BUTTON BATTERIES	CLOTHING	SCRAP METAL	
<b>FREEHOLD BORO</b> 732-462-1410 161 Center Street M-F: 8 a.m.-3:30 p.m.	•	•	•											
<b>FREEHOLD TWP.</b> 732-294-2161 DPW Yard, Jackson Mills Rd. Tu, Th, Sat: 8 a.m.-3 p.m.	•	•	•	•	•		•	•	•		•	•	•	Bulk Waste
<b>HAZLET</b> 732-787-3636 39 Leocadia Ct. M-F: 7:30 a.m.-2:30 p.m., Sat: 8:15 a.m.-1:45 p.m. July/August M-F: 7:00 a.m.-2:30 p.m.	•	•	•	•	•				•	•	•		•	
<b>HIGHLANDS</b> 732-872-1224 Shore Dr. M-F: 10 a.m.-3:30 p.m.; Sat: 9 a.m.-1 p.m.	•	•	•	•	•				•		•	•	•	
<b>HOLMDEL</b> 732-946-4330 DPW Crawford's Corner Rd. M-F: 8 a.m.-2:30 p.m. 2 <sup>nd</sup> /4 <sup>th</sup> Sat. April-May, Sep-Oct.; 2 <sup>nd</sup> Sat. June, July, Aug.	•	•	•					•		•	• Town Hall		•	
<b>HOWELL</b> 732-938-4500 x2450 Old Tavern Rd. 7 days a week 7:30 am – 3 pm, except holidays	•	•	•	•	•	• Sat & Sun 7:30-3p.m.	•		•	•	•	•	•	
<b>KEANSBURG</b> 732-739-5154 Frazee Place M-F: 7 a.m.-3 p.m.; Sat.: 7 a.m.-2 p.m.	•	•	•		•			•	•	•	• School Libr.	•	•	
<b>KEYPORT</b> 732-739-4658 or 3900 Florence Ave. Sat.: 9 a.m.-12 noon	•	•	•	•	•			•	•		•		•	
<b>LAKE COMO</b> 732-681-3393 720 17th Ave. M-F: 7 a.m.-3:30 p.m.; Sat.: 9 a.m.-12 noon	•	•	•	•	•				•	•	•	•	•	
<b>LITTLE SILVER</b> 732-842-2400 22 Fairview Ave. M-F: 8 a.m.-2 p.m.; Sat.: 8 a.m.-12 noon	•	•	•								•			
<b>LONG BRANCH</b> 732-571-6520 Atlantic Ave. M-F: 7:30 a.m.-3 p.m.; Sat.: 9 a.m.-1 p.m.	•	•	•	•	•		• DPW GRG	• NO RIMS		•	• DPW Offc		•	
<b>MANALAPAN</b> 732-446-8404 DPW Bldg., Rt. 522 M-F: 8 a.m.-3:30 p.m.; Sat.: 10 a.m.-2 p.m.	•	•	•						•		•	•	•	
<b>MANASQUAN</b> 732-223-0369- x 3 Iroquois Road M-F: 7:30 a.m.-2:30 p.m.; Sat. & Sun.: 9 a.m.-12 p.m.	•	•	•		•					•	•		•	
<b>MARLBORO</b> 732-536-9295 Municipal Complex M&W: 8 a.m.-1:30 p.m. Wyncrest near School Rd. Sat.: 8 a.m.-4 p.m.	•	•	•	•	•			• NO RIMS			•	•	•	Bulk Waste

LOCATION, HOURS & PHONE NUMBER	RECYCLABLES			VEGETATION			AUTOMOTIVE			HOUSEHOLD			OTHER NOTES	
	BOTTLES & CANS	PLASTICS	PAPER/CARDBOARD	BRUSH	LEAVES	LEAF-COMPOSTING RESIDENT DROP-OFF	MOTOR OIL	TIRES	CAR BATTERIES	APPLIANCES	BUTTON BATTERIES	CLOTHING		SCRAP METAL
<b>MIDDLETOWN</b> 732-615-2008 Kanes Lane Th.-Mon.: 8:30 a.m.-4:30 p.m. (Closed Tues. & Wed.)	•	•	•	•	•		•	• FEE	•	•			•	Freon (FEE \$10)
<b>MILLSTONE</b> 732-446-4249 Municipal Garage/Community Ctr Sat. & Sun.: 8 a.m.-1 p.m.	•	•	•								•			
<b>MONMOUTH BEACH</b> 732-229-2204 Willow Ave. M-F: 7 a.m.-3 p.m.	•	•	•		•		•				•	•	•	Oil Filters
<b>NEPTUNE</b> 732-775-8797 Heck Ave. M-F: 8 a.m.-7 p.m.; Sat.&Sun.: 8 a.m.-3 p.m.	•	•	•	•	•			• FEE	•	•	•	•	•	Concrete, Cooking Grease, Freon, Appliances (FEE)
<b>NEPTUNE CITY</b> 732-775-1607 41 TFH Way 24 hours, 7 days a week	•	•	•								• Mun Bldg		•	
<b>OCEAN TWP</b> 732-531-5001 Sunset Ave. (Summer 4/15 - 9/30 Tues. & Th.: 4 p.m.-7 p.m.; Sat. & Sun.: 8 p.m.-11 p.m.) M-F: 7:30 a.m.-2:30 p.m.	•	•	•								•		•	Grass- Apr.-Nov.
<b>OCEANPORT</b> 732-222-8221 Myrtle Ave. M, T, Th: 7:30 a.m.-3 p.m.; Wed., Fri.: 7:30 a.m.-5 p.m.; Sat, 8 a.m.-1 p.m.; Sun. 10 a.m.-1 p.m.	•	•	•	•				•	• Call				•	Appliances (call for special pick up)
<b>RED BANK</b> 732-530-2770 W. Sunset Ave. Mon.-Sat.: 8 a.m.-3 p.m.	•	•	•								•		•	Plastic Bags
<b>ROOSEVELT</b> 609-448-5745 NO Drop-Off														
<b>RUMSON</b> 732-842-3300 East River Rd. M-F: 7 a.m.-7 p.m.; Sat.&Sun.: 9 a.m.-3 p.m.	•	•	•								•			American Flag drop off; Books at Green Day Call Recycling Office
<b>SEA BRIGHT</b> 732-842-0099											• Boro Hall			
<b>SEA GIRT</b> 732-449-6463 612 Philadelphia Blvd. M-Th: 7:30 a.m.-3:30 p.m.; Fri: 8 a.m.-3 p.m.; Sat & Sun: 8 a.m.-12 noon	•	•	•				•	•	•	•		•	•	
<b>SHREWSBURY BORO</b> 732-741-4200 White Rd. M-F: 7 a.m.-3 p.m. (Mar-Dec: Sat.: 8 a.m.-12 noon)	•	•	•				•	•	•		•	•	•	
<b>SHREWSBURY TWP</b> 732-542-0572 or 0675 Bins available	•	•	•											

LOCATION, HOURS & PHONE NUMBER	RECYCLABLES			VEGETATION			AUTOMOTIVE			HOUSEHOLD				OTHER NOTES
	BOTTLES & CANS	PLASTICS	PAPER/CARDBOARD	BRUSH	LEAVES	LEAF-COMPOSTING RESIDENT DROP-OFF	MOTOR OIL	TIRES	CAR BATTERIES	APPLIANCES	BUTTON BATTERIES	CLOTHING	SCRAP METAL	
<b>SPRING LAKE</b> 732-449-2016 Salem & Fifth Aves. Mon.-Sat.: 8 a.m.-2 p.m.	•	•	•	•	•	• M-F Only	•	•	•		•	•	•	
<b>SPRING LAKE HEIGHTS</b> 732-449-6983 Atlantic & Railroad Aves. Mon.-Sat.: 7 a.m.-3 p.m.	•	•	•	•	• Bag				•		•	•		Fluorescent tube bulbs
<b>TINTON FALLS</b> 732-542-3400 -x4 556 Tinton Ave. Mon.-Sat.: 7 a.m.-3:30 p.m.	•	•	•	•	•			•	•	•	•	•	•	
<b>UNION BEACH</b> 732-264-1133 1400 Florence Ave. M-F: 7 a.m.-3 p.m.; 1st & 3rd Sat. open until noon	•	•	•	•	• Bag		•	•	•	•	•	•	•	Name Brand Ink Cartridges
<b>UPPER FREEHOLD</b> 609-758-7715 Municipal Building Mon.: 8 a.m.-2 p.m., Sat.: 8 a.m.-2 p.m.	•	•	•	•	•		•	•	•	•	•	•	•	Freon Appliances (FEE)
<b>WALL TOWNSHIP</b> 732-449-2700 (1) Tilton Corners (2) Monmouth Blvd. M-F: 7:30 a.m.-3:15 p.m.; Sat.: 8 a.m.-3 p.m.	•	•	•	•	•	• Atlantic Ave.		•	•	•	•	•	•	
<b>W. LONG BRANCH</b> 732-571-5967 Monmouth Rd. M-F: 7 a.m.-3:30 p.m.; Sat.: 8 a.m.-1 p.m.; Sun.: 8 a.m.-12 noon	•	•	•	•	•						•	•	•	



## COUNTY Drop-Off Facilities

# Free

### MONMOUTH COUNTY RECLAMATION CENTER (GATE A, LANDFILL) RECYCLABLES

6000 Asbury Ave., Tinton Falls, NJ 07753  
732-683-8686

**OPEN:** Monday-Friday: 7 a.m. - 3:30 p.m.  
Saturday: 7 a.m. - 2 p.m.  
7 a.m. - noon: Memorial, Independence, and Labor Day

**CLOSED:** Sundays, Thanksgiving, Christmas and New Year's Day



### MONMOUTH COUNTY HOUSEHOLD HAZARDOUS WASTE FACILITY

3211 Shafto Rd.,  
Tinton Falls NJ 07724  
732-683-8686 (follow prompts for  
Household Hazardous Waste)  
Ext. 5210

**OPEN:** Tuesday & Wednesday  
11 a.m. - 4 p.m.  
Friday 11 a.m. - 4 p.m.  
Saturday 8 a.m. - 4 p.m.

**CLOSED:** Mondays, Thursdays and  
all Major Holidays



**LIMIT:** Up to 20 gallons of liquid and 220 lbs of dry material per visit. Liquid containers limited to 5 gallon size maximum. Solid packages limited to 50 lb. weight maximum.

**Open to Monmouth County residents only. RESIDENT ID REQUIRED.**  
**Monmouth County reserves the right to reject participants and/or materials at its sole discretion**

- No appointment required to drop off materials at the facility.
- **No business or commercially generated waste materials accepted.**
- Asbestos, ammunition, fireworks, gunpowder, boat flares, radioactive materials (smoke detectors), medical waste and medical sharps are not permitted for disposal at the facility. See p. 5.

## PRIVATE Drop-Off Facilities

These lists are provided for information purposes only. The county does not endorse any company.

<b>PRIVATE BULK WASTE RECYCLING FACILITIES</b> (You Pay \$)* <i>Call ahead to confirm prices, hours, location, and special requirements</i>	Brush, Stumps, Large tree parts*	Clean (untreated) Wood & Palettes*	Concrete, Brick, Block*	Takes other Bulk Items, please call
BAYSHORE RECYCLING CORP, Keasby 732-738-6000		●	●	●
CLAYTON BLOCK, Wall Township 800-662-3044			●	
FCI, Freehold 732-462-1001	●	●	●	●
GOLD STAR RECYCLING Morganville 732-617-7490			●	
J. MANZO Aberdeen 732-946-7100	●		●	
LERTCH RECYCLING Wall Township 732-681-0206	●	●	●	
LUCAS BROTHERS Morganville 732-536-6663			●	
MARPAL Tinton Falls 732-542-2920				●
MAZZA & SONS, INC. Tinton Falls 732-922-9292	●	●	●	●
OCEAN COUNTY RECYCLING Toms River 732-244-1716	●	●	●	
RELIABLE WOOD PRODUCTS Jersey City 800- 637-4140	●	●		
RESOURCE ENGINEERING Howell 732-364-6466	●			
ROSANO ASPHALT Howell 732-681-5000			● No brick	
STAVOLA COMPANIES Tinton Falls 732-542-2328			●	

<b>PRIVATE SCRAP METAL FACILITIES</b> (Depending on type quantity, you may pay or they may pay you) <i>Call ahead to confirm prices, hours, location, and special requirements.</i>	Accepts Appliances with Freon*	Accepts Propane Tanks...
A & A IRON & METAL 80 Hendrickson Rd., Freehold 732-780-7431		
BEACON METAL CO. 215 Throckmorton St., Freehold 732-462-0543	●	● Empty, valve removed
JOHN BLEWITT, INC. 246 Herbertsville Rd., Howell 732-938-5331	●	● Empty, valve removed
BRICK RECYCLING 2480 Hooper Ave, Brick Twp. 732-477-0880		
BRICK RECYCLING 5310 Route 34, Wall Twp. 732-477-0880		
DR. COPPER MOBILE SCRAP METAL 1755 Rt. 9 Howell 732-829-4466		
MAZZA & SONS, INC. 3230 Shafto Rd, Tinton Falls 732-922-9292		● Empty or Full, valve removed
MAZZA SCRAP 101 Memorial Dr., Neptune 732-774-4100	●	
RED BANK RECYCLING 64 Central Ave., Red Bank 732-747-7779	●	

\*Costs range from \$0-35 per unit. Several municipalities also accept these items, see pp. 10-13  
Costs range from \$0-10. Tanks purchased prior to 1998 DO NOT have overfill valves and must be recycled. Many retailers (gas stations, home improvement centers, etc.) offer credit up to \$20 when you trade in an old tank.

## Composting IS Recycling

Composting is when you separate out your kitchen vegetables and yard waste at home, and place it into a special pile so that it that breaks down into a natural, soil-like product that can be used as fertilizer.



ABOVE; LEFT and RIGHT: Two styles of composting bins.

### STEP 1: Choose the Right Materials

- Vegetable & Fruit Scraps
- Tea Bags
- Coffee Grounds & Filters
- Egg shells
- Peanut and Nut Shells
- Sawdust
- Dust/Lint
- Nail Clippings
- Human Hair
- Hay/Straw
- Feathers
- Paper
- Weeds\*
- Fabrics (*cotton, silk*)
- Bark
- Wood Ashes
- Corn Cobs
- Horse/Chicken/Cow Manure
- Leaves (*save in fall for spring!*)
- Garden Clippings
- Stalks and Stems
- Vines
- Grass.

\*No aggressive weeds or weeds gone to seed

**Do NOT Compost:** Meat/Poultry/Fish • Fats/Oils • Bones • Dairy Products • Plastics or Synthetic Fibers • Pet Waste (*meat eating pets*) **IN GENERAL, NO ANIMAL PRODUCTS OR DAIRY**

### STEP 2: Select & Prepare a Site -

Choose a place in your yard that is convenient (*sunny or shady will do*) and fashion some type of area or enclosure for your pile

- Assemble wooden stakes and/or chicken wire into a simple round enclosure.
- Construct a wooden compost bin (*use old lumber, if you have any*)

- Build a 3-sided enclosure with cinder blocks. Leave the front open.
- Purchase a ready-made bin from a home center or garden supplier.
- Or you can opt for no enclosure; just pile the materials up, keeping them in a fairly dense heap.

### STEP 3: Add Your Compost Materials

- Layer dry (*leaves*), and moist (*grass, kitchen scraps*) in a 1:1 ratio.
- Add enough water to keep the compost heap moist, but not soggy.
- Provide adequate ventilation. To increase air circulation, turn the compost with a pitchfork at least once a month (*helpful but not absolutely necessary*). You can also push rods or poles through the heap and then remove them, leaving channels through which air can pass, or insert hollow, perforated poles.
- As the compost materials decompose, they create heat. This is natural, and when the pile is turned, you will be able to feel the heat.
- If your compost pile is properly prepared, contains no animal fats and is turned regularly, it will not attract pests or create odors.



## **STEP 4: Check Whether the Compost is Ready**

- Decomposition will occur in as little as 6 weeks, depending on the materials in the pile, the size of the pile and how often it is turned. A “lazy” composter will still get compost—it will just take longer (10-18 months). The compost is ready for use when it is dark brown, and when the materials have broken down into small or fine particles.

## **STEP 5: Use the Compost**

- Sift through the compost and set aside the decomposed materials, returning the rest to the pile. Apply the decomposed matter to your garden in a layer about 1 to 3 inches thick. As you apply the compost, turn and mix it with the soil. It is best to apply no more than one pound of compost per square foot of soil.

### **COUNTY COMPOSTING DEMONSTRATION SITE:**

#### ***Deep Cut Gardens, Middletown***

Free composting workshops offered each fall and spring. Or, view instructions, sample composting elements and the beautiful gardens, anytime. 732-671-6050

<http://www.monmouthcountyparks.com>



*Left: Composting display at Deep Cut Gardens, Middletown. Right: “The Earth Machine” recommended by Monmouth County for home gardening composting.*

### **RECYCLING PROGRAMS IN YOUR TOWN**

- Tired of Litter in Your Town? Monmouth County Clean Communities will supply your clean-up team with: bags, safety vests, and litter sticks. We will also haul away your collected garbage and pay for its disposal. All you have to do is provide the volunteers. 732-683-8686 x7539
- Recycling Presentations in Your School. Presented by staff from the Recycling Office. Topics include: recycling, composting, careers in the environment. 732-683-8686 x8967

## Monmouth County Reclamation Center

6000 Asbury Avenue, Tinton Falls, NJ  
Telephone: 732-683-8686

### HOURS OF OPERATION

Monday-Friday: 7 a.m. - 3:30 p.m.  
Saturday: 7 a.m. - 2 p.m.

Closed on Sundays, New Years Day, Thanksgiving,  
Christmas Day

Closes at Noon on Memorial Day, Independence Day,  
and Labor Day

### TARIFF SCHEDULE AND REGULATIONS

Effective March 1, 2018

**Solid waste is not accepted from out-of-county routes.**

- Tarps are required for all open loads (*enforced by police*).
- Asbestos accepted by appointment only (*Wednesdays & Saturdays*).
- Tires may not be mixed with other materials (*added Surcharge*).
- All vehicles charged on actual tonnage or part thereof.

### DUMPING PERMITS

Are not required for any car or truck with a gross vehicle registered weight (GVRW) of 9,000 pounds or less, or 16,000 pounds combined maximum GVRW for a vehicle pulling a trailer, which is dumping personal waste.

All others, including vehicles less than 9,000 pounds that are hauling others' waste must secure a State DEP permit before dumping.

**THE LANDFILL CANNOT SELL YOU THIS NJ STATE PERMIT!**

Applications for "self-generators" are available from the County Solid Waste Enforcement Office at the Reclamation Center (732-683-8686 x5658).

State Police Investigation (A-901) is required for those collecting/dumping of others' waste (additional fees and waiting period involved).

General hauler registration questions may be directed to the NJDEP (609-341-5475).

Waste Disposal Categories	TIPPING FEE	TAXES	TOTAL CHARGE
Municipal and Household waste (#10)	\$71.00	\$11.10	\$82.10/ton
Commercial and Institutional Waste (#10)	\$71.00	\$11.10	\$82.10/ton
Vegetative Waste (No Leaves or Grass) (#23)	\$71.00	\$11.10	\$82.10/ton
Bulky & Cleanup Waste (#13)	\$104.00	\$11.10	\$115.10/ton
Construction & Demolition Waste (#13C)	\$104.00	\$11.10	\$115.10/ton
Animal & Industrial Waste (#25), (#27)	\$99.00	\$11.10	\$110.10/ton
Contaminated Soil (TESTING REQUIRED) (#27)	\$104.00	\$11.10	\$115.10/ton
Asbestos (bagged & labeled) (#27)	\$164.50	\$11.10	\$175.60/ton
plus \$.50/ bag handling charge)			
Tires & Cables (#13)	\$238.50	\$11.10	\$249.60/ton

## Monmouth County Reclamation Center

### STATE TAXES

Collected at the landfill include:  
Landfill Contingency Tax (\$.50/ton),  
Closure Escrow Tax (\$1.00/ton),  
NJ Recycling Tax (\$3.00/ton)  
Host Community Fee \$6.60/ton, paid to Tinton Falls.

### GRASS CLIPPINGS

Are accepted separate from other wastes  
\$3.00 per car or  
\$36.50 per ton car or truck  
Station Wagons, Minivans, and SUV-type vehicles  
qualify for the car rate only when all grass is behind  
the rear most seat.

### CASH PAYMENTS

Are accepted only from cars or small trucks dumping  
personal waste. Commercial customers must estab-  
lish a pre-paid account with the Reclamation Center  
(call MCRC Scale House @ 732-683-8686 x5600)

Mail Address:  
6000 Asbury Avenue,  
Tinton Falls, NJ 07753  
attention MCRC Payments

Government customers may contact the  
Finance Department 732-431-7391 x7454  
Hall of Records,  
1 East Main Street  
Freehold, NJ  
Delinquent accounts may not dump.

### PROHIBITED RECYCLABLES

- Newspaper
- Glass/Aluminum/Tin,
- Plastic Food &  
Beverage Containers
- Leaves & Grass  
Clippings
- Clean Mixed paper
- Corrugated Cardboard
- Car Parts
- Batteries
- Appliances
- Concrete\*
- Asphalt\* (*except shingles*)
- Tree Stumps\*
- Large tree parts\*  
(*over 3" diameter*)

*\*Car loads may include small amounts of these last  
four bulky items.*

The landfill does not accept any liquids or hazardous  
wastes. Since January 1, 2011 Computers and Televi-  
sions are no longer accepted for disposal, pursuant to  
the NJ Electronic Waste Management Act.

### HOUSEHOLD CHEMICALS

Residents needing to dispose of oil paints or chem-  
icals can dispose of these household hazardous  
wastes at the County Household Hazardous Waste  
(HHW) Facility. No appointments needed.

Latex paint is not a Household Hazardous waste  
(dry/dispose with regular trash).

Call 732-683-8686 ext. 5210

No charge to qualified participants.

Hours of Operation:

Closed Mondays & Thursdays effective 10/1/18

Tuesday & Wednesday: 11 a.m. - 4 p.m.

Friday: 11 a.m. - 4 p.m.

Saturday: 8 a.m.-4 p.m.

For additional copies of our Recycling Directory or how to handle recyclable and hazardous materials,  
call 732-683-8686 ext. 8967

*Fran Metzger, CRP, SMRP, CCCC, District Recycling Coordinator*

*Jaye Sims, CCCC, SMRP, Assistant Recycling Coordinator*

*Stuart Newman, CRP, CCCC, Solid Waste Coordinator*

*Will Johnson, CCCC, Clean Communities Coordinator*

*fran.metzger@co.monmouth.nj.us*

*jaye.sims@co.monmouth.nj.us*

*stuart.newman@co.monmouth.nj.us*

*william.johnson@co.monmouth.nj.us*

Visit us on line at

<http://www.visitimonmouth.com/reclamation>



*Landfill at Monmouth County Reclamation Center, Tinton Falls*



## **Monmouth County Reclamation Center**

Recycling & Solid Waste  
6000 Asbury Avenue  
Tinton Falls, NJ 07753

*Hours of Operation*

### **Reclamation Center**

Monday - Friday, 7 a.m. - 3:30 p.m.  
Saturday 7 a.m. - 2 p.m.

### **Recycling Office**

Monday - Friday, 9 a.m. - 4:30 p.m.  
732-683-8686 Ext. 6721

## **MONMOUTH COUNTY BOARD OF CHOSEN FREEHOLDERS**

**Director Thomas A. Arnone**

**Deputy Director Lillian G. Burry**

**John P. Curley**

**Patrick Impreveduto**

**Gerry P. Scharfenberger, Ph.D.**